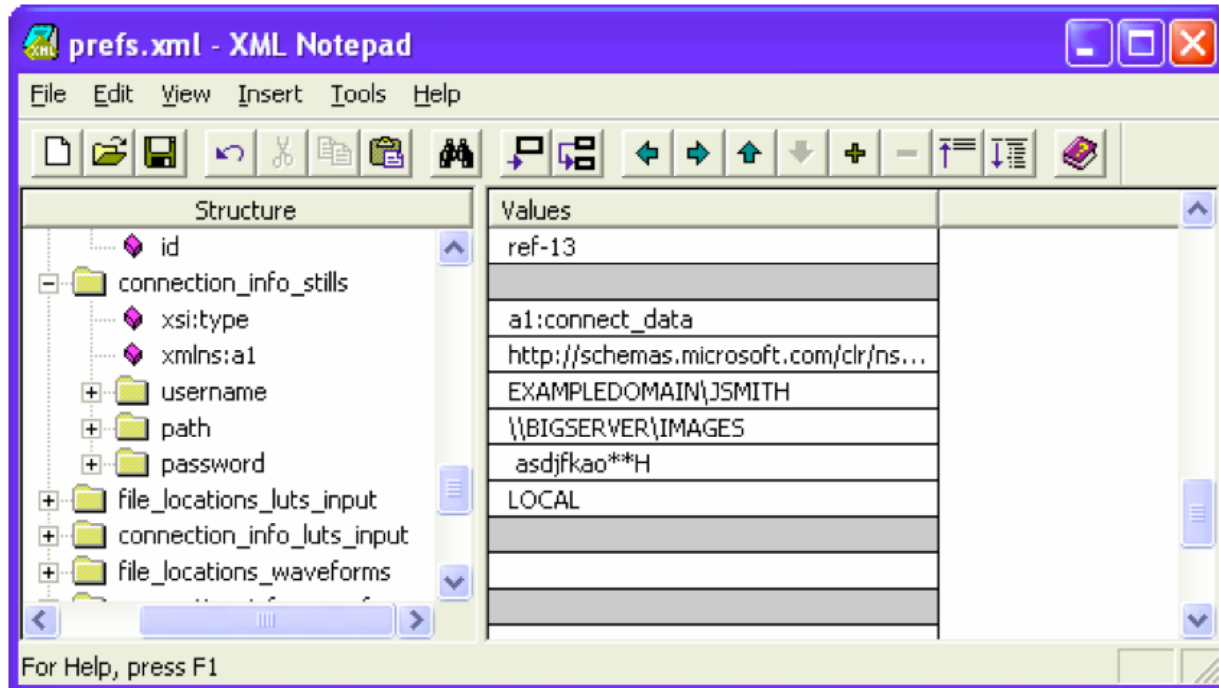


XML Editor:



Step 3: Copy the preferences back to the Cinemàge

5. Insert a USB memory key into the Cinemàge.
6. On the front panel, from the first menu, hold down the button that says “hold and release for setup” until it flashes.
7. Select “MANAGE PREFERENCES”.
8. Select “LOAD PREFERENCES FROM USB”.
9. The new preferences are now being loaded. Note that the process of reconnection happens in the background after the button is released.
10. Press “BACK” twice then select “REMOTE FILE SETUP”
11. Select the file type that you are setting, in this case stills. If the file path appears here then reconnection was a success. Note that the new path will only be saved to preferences again if the connection is complete.